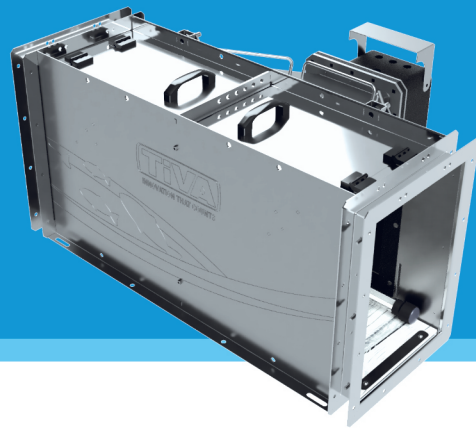


TiVA FC

SPECIFICATIONS



TiVA FC

REAL-TIME ANALYSIS – CUTTING EDGE FISH COUNTING

POWER SUPPLY

| | |
|--------------------------------|--------------------|
| Voltage | 110-240VAC / 24VDC |
| Power usage, typical operation | Approx. 35 W |
| Power usage, energy-saving | Approx. 20 W |
| Solar-powered | Optional feature |

ELECTRICAL CABINET

| | |
|---------------------|--------------------|
| Size (H x W x D) | 500 x 400 x 220 mm |
| IP Protection class | IP65 |
| 4G router | Included |
| Remote relay | Included |

CABLING

| | |
|------------------------------|--------------------|
| Electrical cabinet – counter | 15 m (standard) |
| | 25–50 m (optional) |
| Counter – lighting tubes | 1 m (standard) |

ILLUMINATION

| | |
|-------------|-----|
| White light | Yes |
| Red light | Yes |

TUNNEL BIG/SMALL

| | |
|--------------------------|--------------------------|
| Length | 140 cm / 100 cm |
| Inner dimensions (H x W) | 50 x 50 cm / 40 x 30 cm |
| Weight (incl. cone) | 80 kg / 70 kg |
| Material | Stainless steel (1.4404) |
| Service hatch | Included |

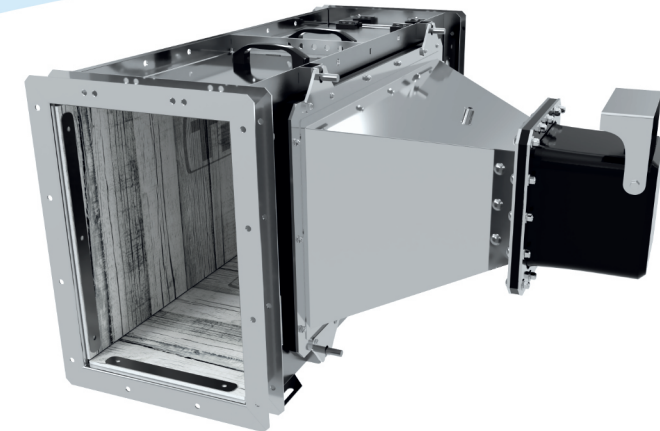
OPTICS

| | |
|------------------------|----------------------|
| Video | Network camera |
| Resolution | Up to 1920 x 1080 px |
| Frame rate | 30 fps |
| Day and night function | Yes, IR filter |
| Size measuring | 3D camera |

SOFTWARE

| | |
|---------------------|--|
| Analysis | Real time Timestamp, direction, length, distance, still image, depth image, video footage |
| Obtained data | Web interface |
| Interface | Web interface |
| Species recognition | Yes, with AI* |
| Fungal detection | Yes, with AI* |
| Adipose detection | Yes, with AI* |

* Optional feature if operating agreement has not been signed. Additional information upon request.



Fish counting using artificial intelligence

TiVA FC is a fish counter that combines the latest technological advancements with years of experience in fish monitoring.

The counter delivers **high-quality results and high reliability** alongside a user-friendly platform. It is based on camera technology that recognizes, counts, and measures fish using smart algorithms and software.

TiVA's fish counter is **continuously connected to a web platform** where data can be accessed almost instantly as the fish pass by the camera. The platform features user-friendly analysis and reporting tools, accessible from any computer or mobile device for quick and easy access.



INNOVATION THAT COUNTS



Flottiljvägen 16
392 41 Kalmar, Sweden
+46 70 - 208 91 90
www.tiva.se

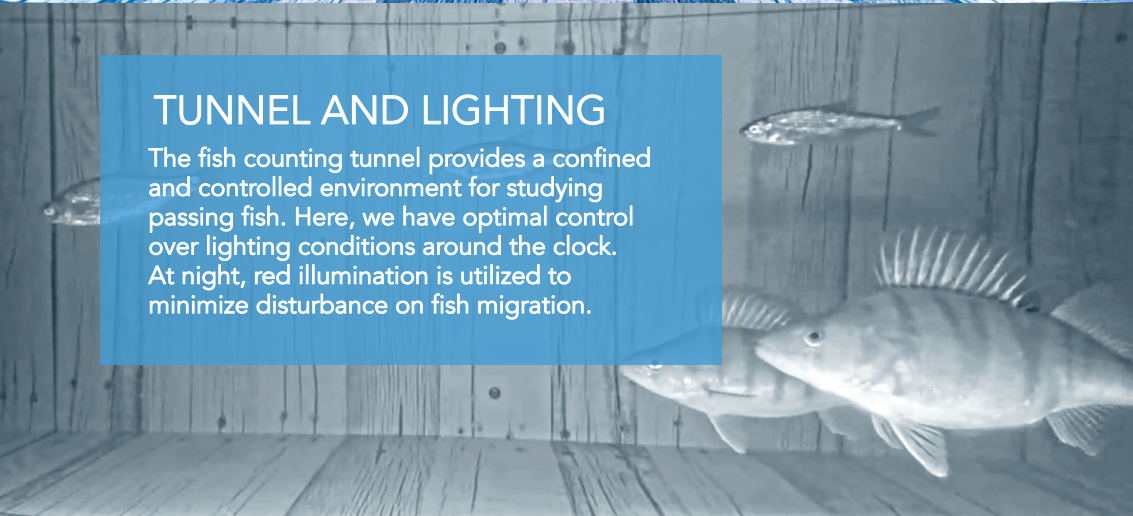


TROUT 68 CM UPSTREAM



TUNNEL AND LIGHTING

The fish counting tunnel provides a confined and controlled environment for studying passing fish. Here, we have optimal control over lighting conditions around the clock. At night, red illumination is utilized to minimize disturbance on fish migration.



FISH RECOGNITION USING AI

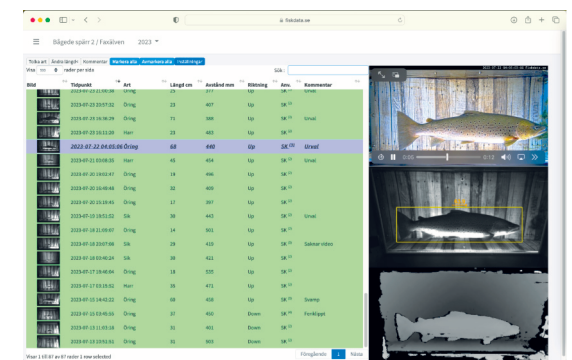
The fish counter utilizes advanced camera technology coupled with artificial intelligence in the form of custom-trained algorithms designed specifically for fish detection. The system processes all video streams in real-time and counts only fish that make a complete passage through the fish counter. In addition to counting fish with species identification, we have also implemented detection of adipose fin and fungal growth.

WEB PLATFORM

All the records collected by TiVA FC are continuously sent to a user-friendly web platform where the user can access all the data and view all the video clips.

The platform features tools for analyzing every registration and create reports with charts and tables. Of course, it's also possible to export all the data to Excel or similar software for further data processing.

FISKdata.se



CAMERA CONE

The fish counter's camera cone contains the technology required for reliable data collection. It includes a 3D camera that enables precise measurement of fish size, as well as an HD network camera with a 1/1.8" image sensor that provides sharp images even in low-light conditions. The cone also houses hardware that processes data in real-time and uploads it to our web platform.

