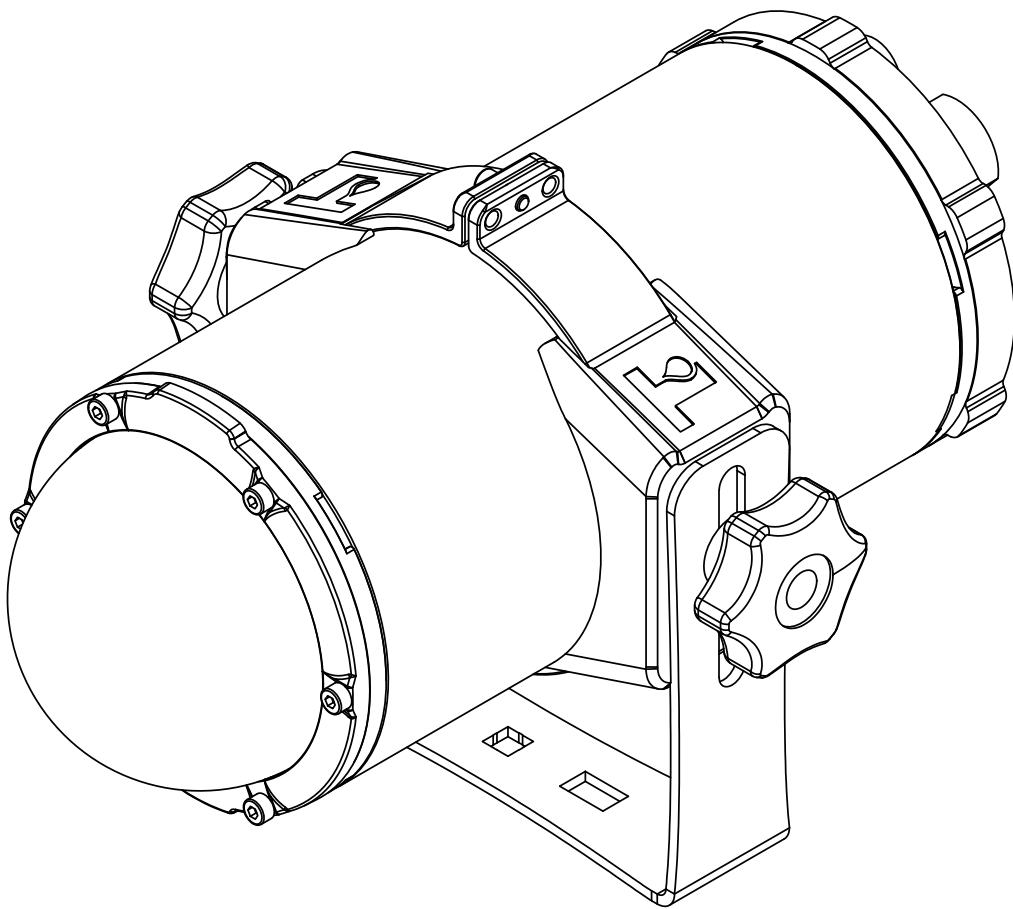
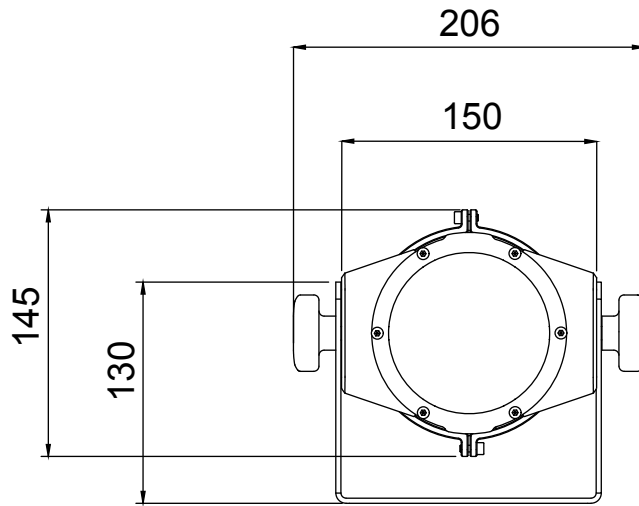


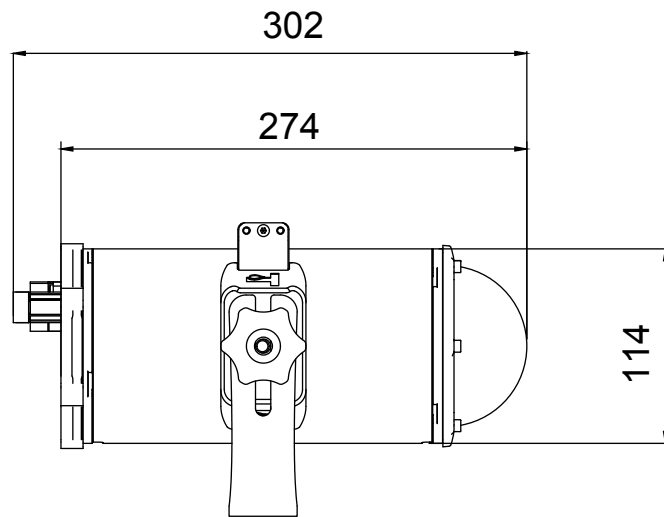
TiVA UVC



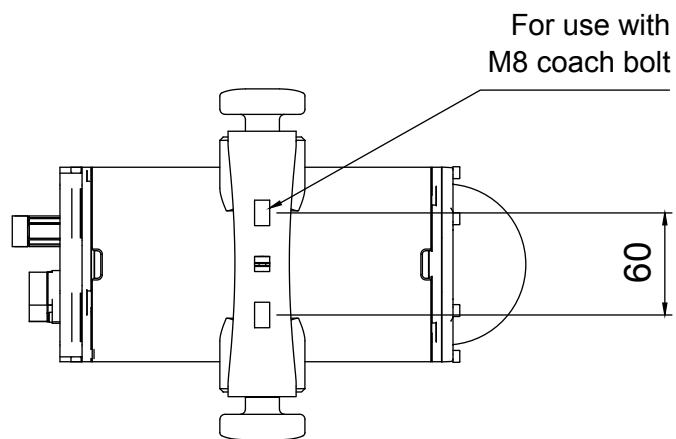
TiVA
INNOVATION THAT COUNTS



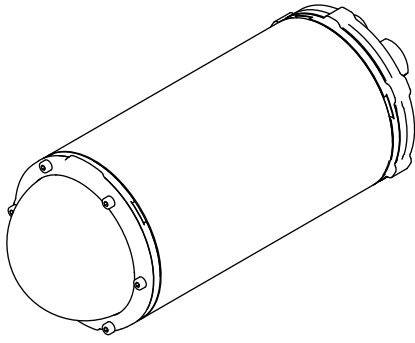
FRONT VIEW
[mm]



SIDE VIEW
[mm]

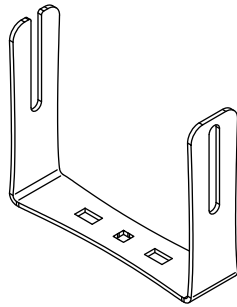


BOTTOM VIEW
[mm]



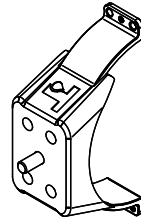
1x

[camera housing]



1x

[bracket]



2x

[clamps]



2x

[star knobs]



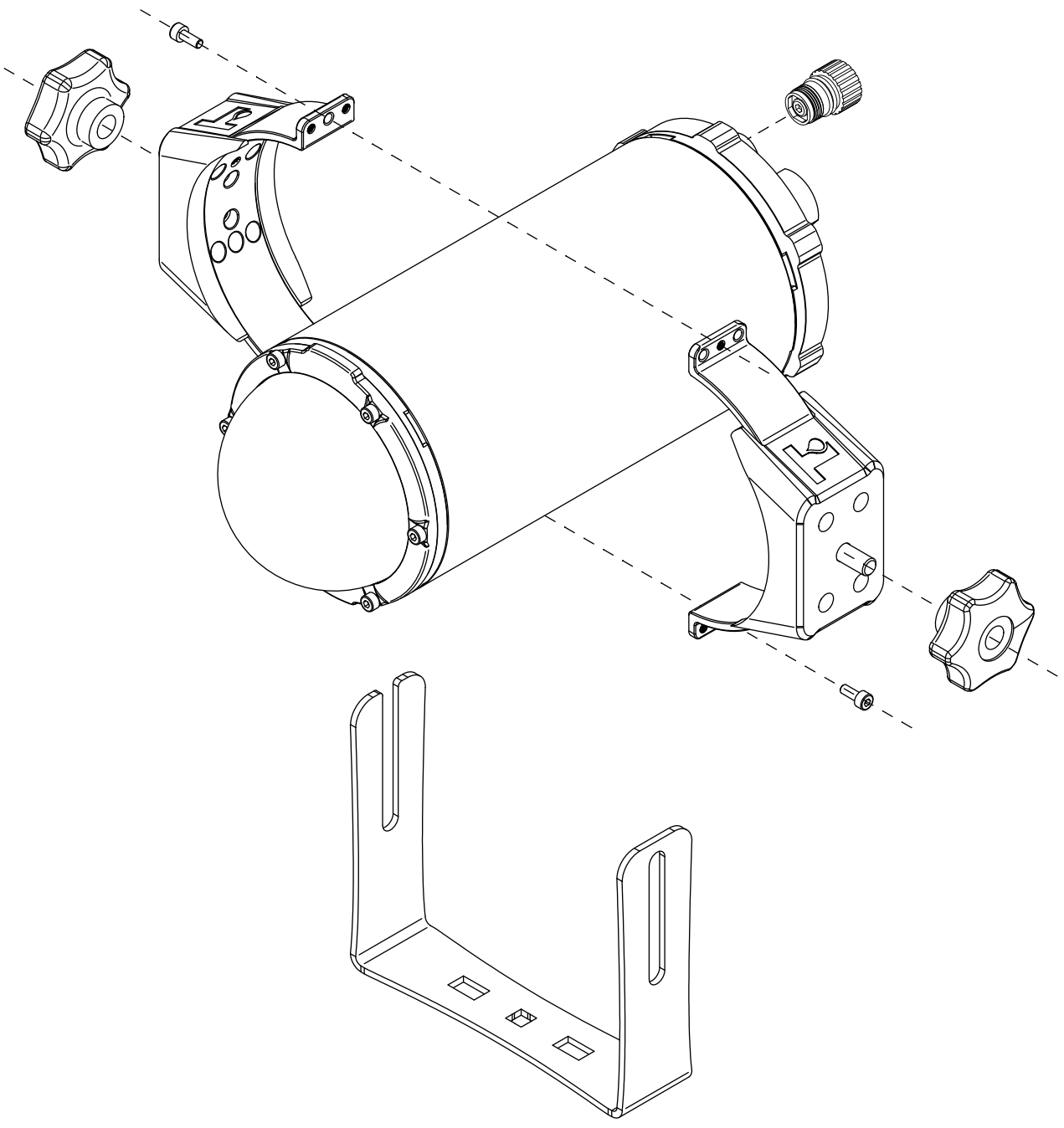
1x

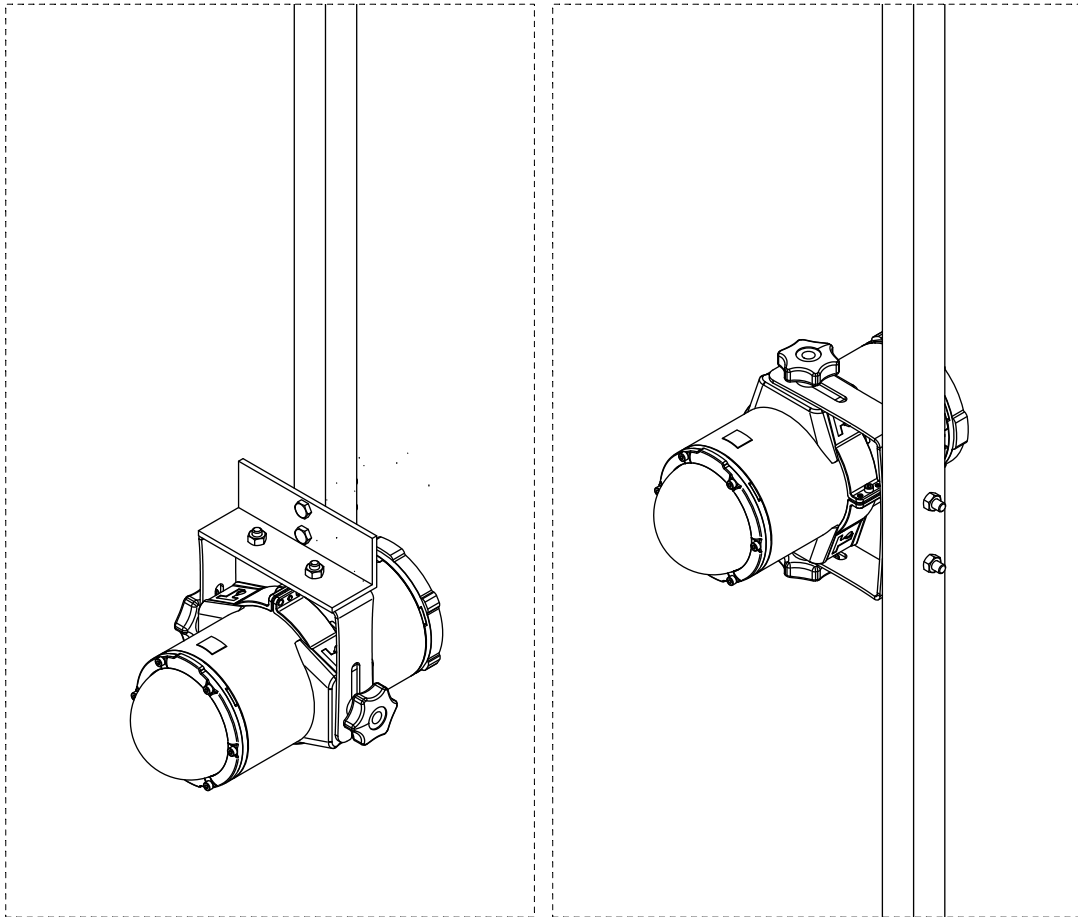
[pressure relief valve cap]



2x

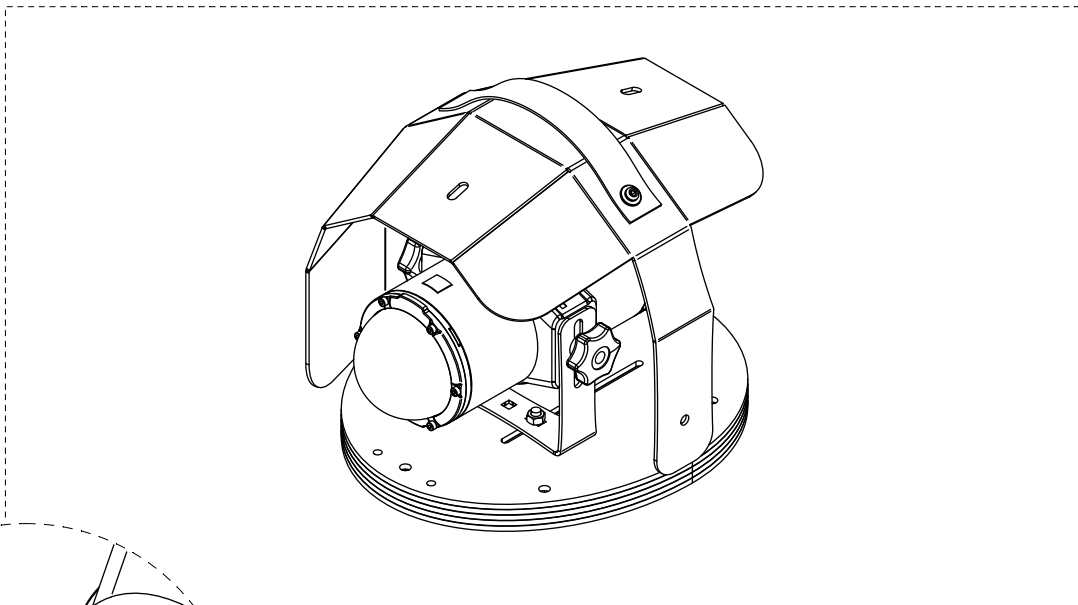
[M4 screws]



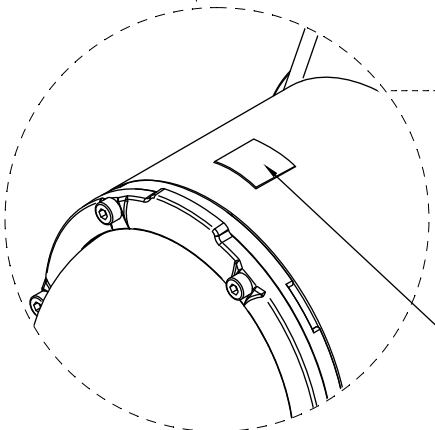


DOWNWARD MOUNTED

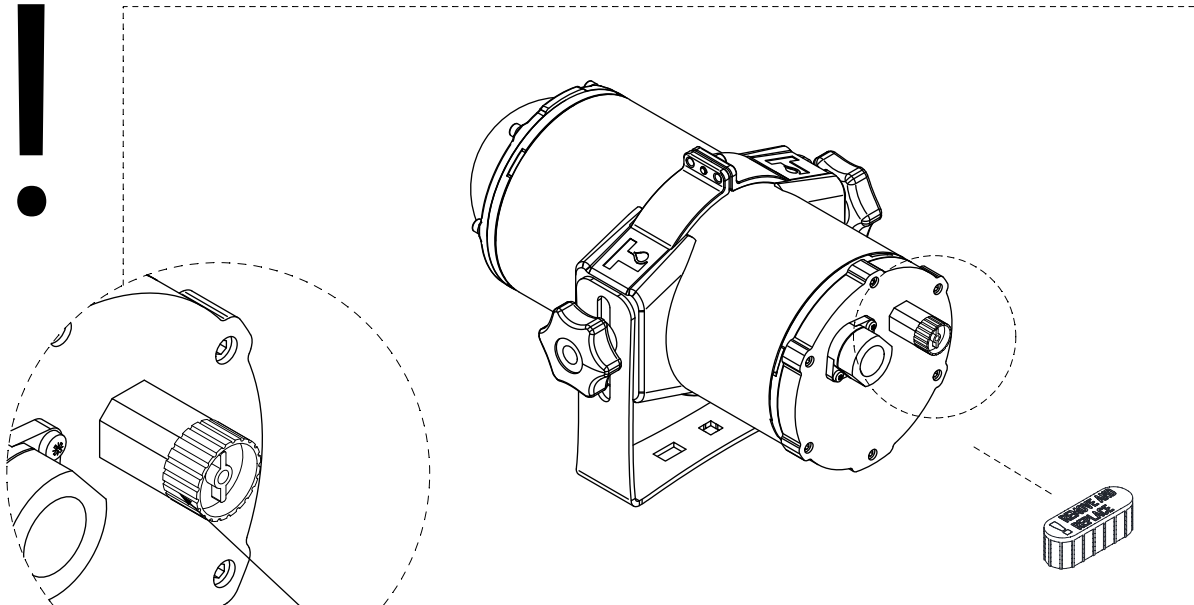
SIDE MOUNTED



RIVERBED MOUNT

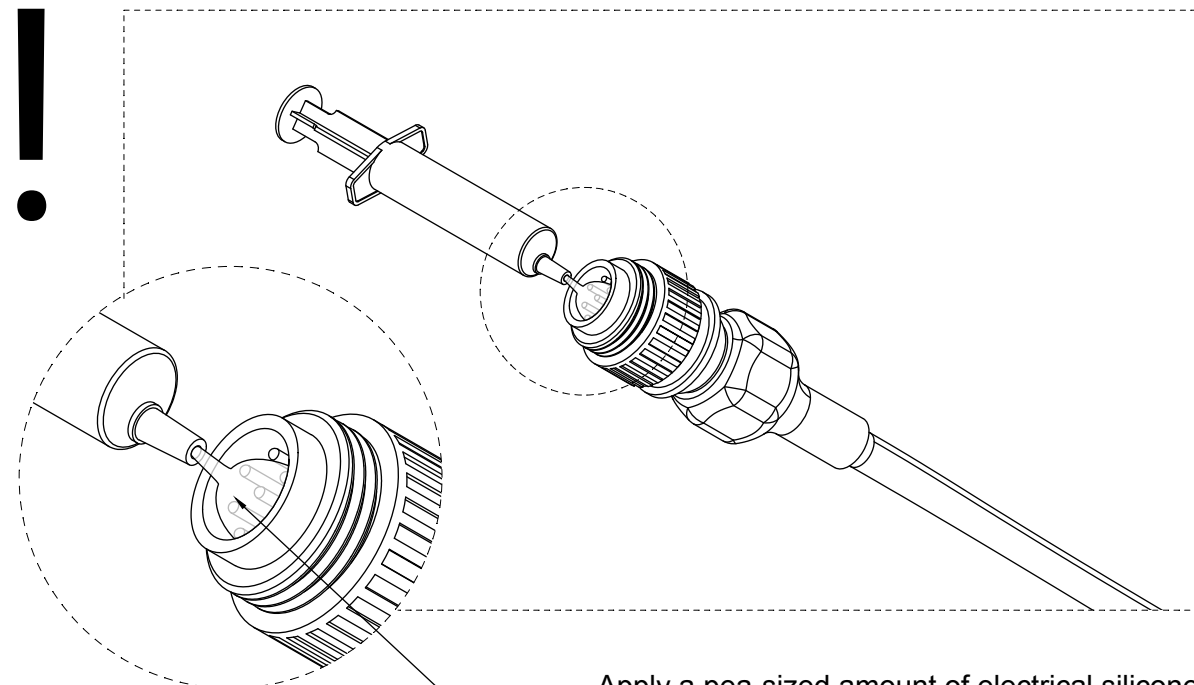


When mounted, the label must always be oriented upwards.



Replace the protective cap with the pressure relief valve cap. Lightly lubricate the two O-rings with Molykote 111 silicone grease before screwing it in.

Ensure that the cap is properly secured before placing the camera in water.



Apply a pea-sized amount of electrical silicone into the male connector before connecting the cable to the camera connector.

